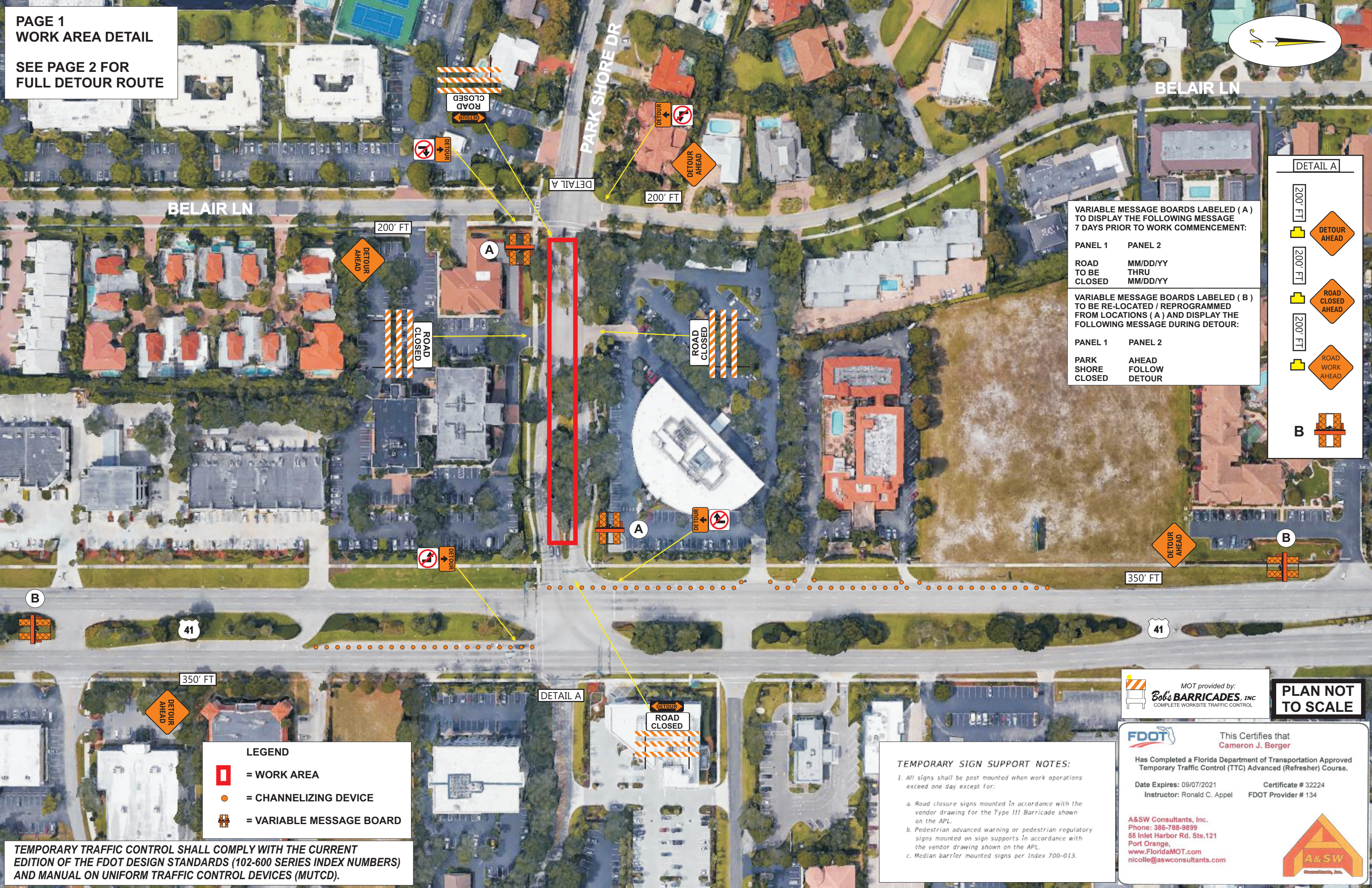


SEE PAGE 2 FOR
FULL DETOUR ROUTE



TEMPORARY TRAFFIC CONTROL SHALL COMPLY WITH THE CURRENT EDITION OF THE FDOT DESIGN STANDARDS (102-600 SERIES INDEX NUMBERS) AND MANUAL ON UNIFORM TRAFFIC CONTROL DEVICES (MUTCD).

LEGEND

- = WORK AREA
- = CHANNELIZING DEVICE
- = VARIABLE MESSAGE BOARD

TEMPORARY SIGN SUPPORT NOTES:

1. All signs shall be post mounted when work operations exceed one day except for:

- a. Road closure signs mounted in accordance with the vendor drawing for the Type III Barricade shown on the APL.
- b. Pedestrian advanced warning or pedestrian regulatory signs mounted on sign supports in accordance with the vendor drawing shown on the APL.
- c. Median barrier mounted signs per Index 700-013.

MOT provided by:
Bob's BARRICADES, INC.
COMPLETE WORKSITE TRAFFIC CONTROL

This Certifies that
Cameron J. Berger

Has Completed a Florida Department of Transportation Approved Temporary Traffic Control (TTC) Advanced (Refresher) Course.

Date Expires: 09/07/2021 Certificate # 32224
Instructor: Ronald C. Appel FDOT Provider # 134

A&SW Consultants, Inc.
Phone: 386-788-9899
55 Inlet Harbor Rd. Ste.121
Port Orange,
www.FloridaMOT.com
nicolle@aswconsultants.com

A&SW
Consultants, Inc.

DETAIL A

200' FT

200' FT

200' FT

B

VARIABLE MESSAGE BOARDS LABELED (A) TO DISPLAY THE FOLLOWING MESSAGE 7 DAYS PRIOR TO WORK COMMENCEMENT:

PANEL 1	PANEL 2
ROAD TO BE CLOSED	MM/DD/YY THRU MM/DD/YY

VARIABLE MESSAGE BOARDS LABELED (B) TO BE RE-LOCATED / REPROGRAMMED FROM LOCATIONS (A) AND DISPLAY THE FOLLOWING MESSAGE DURING DETOUR:

PANEL 1	PANEL 2
PARK SHORE CLOSED	AHEAD FOLLOW DETOUR

PLAN NOT TO SCALE



SEE PAGE 1

TEMPORARY TRAFFIC CONTROL SHALL COMPLY WITH THE CURRENT EDITION OF THE FDOT DESIGN STANDARDS (102-600 SERIES INDEX NUMBERS) AND MANUAL ON UNIFORM TRAFFIC CONTROL DEVICES (MUTCD).

TEMPORARY SIGN SUPPORT NOTES:

1. All signs shall be post mounted when work operations exceed one day except for:

- a. Road closure signs mounted in accordance with the vendor drawing for the Type III Barricade shown on the APL.
- b. Pedestrian advanced warning or pedestrian regulatory signs mounted on sign supports in accordance with the vendor drawing shown on the APL.
- c. Median barrier mounted signs per Index 700-013.

MOT provided by:
Bob's BARRICADES, INC.
COMPLETE WORKSITE TRAFFIC CONTROL

PLAN NOT TO SCALE

FDOT This Certifies that
Cameron J. Berger
Has Completed a Florida Department of Transportation Approved Temporary Traffic Control (TTC) Advanced (Refresher) Course.
Date Expires: 09/07/2021 Certificate # 32224
Instructor: Ronald C. Appel FDOT Provider # 134

A&W Consultants, Inc.
Phone: 386-788-9899
55 Inlet Harbor Rd. Ste.121
Port Orange,
www.FloridaMOT.com
nicolle@aswconsultants.com