



GSAC Fire Code Presentation

NAPLES FIRE RESCUE

PURPOSE:

To provide the community with an understanding of common Fire and Life Safety Code issues in Multifamily buildings.



FIRE DOOR:

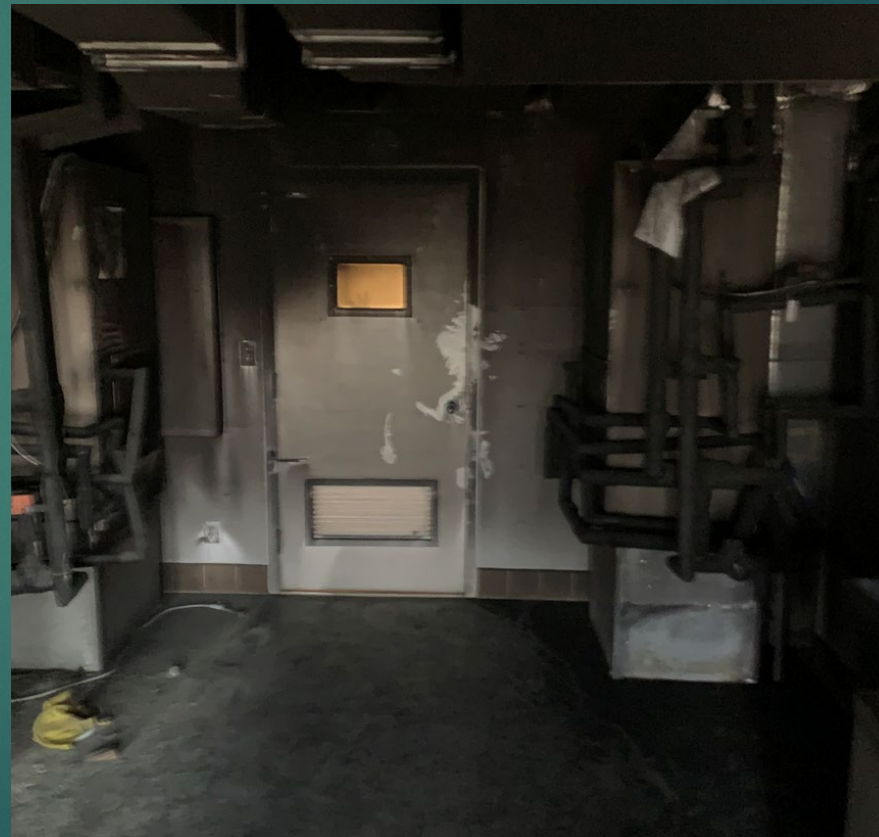
A fire door is a door with a fire-resistance rating (sometimes referred to as a fire **protection** rating for closures) used as part of a passive fire **protection** system to reduce the spread of fire and smoke between separate compartments of a structure and to enable safe egress from a building or structure.



FIRE DOOR:



Recent High-Rise Fire in the City of Naples



Fire Prevention Staff



Adopted
into law by
FL Statute
633

Florida Fire Prevention Code

Sixth Edition

Jimmy Paterson
Chief Financial Officer
State Fire Marshal



Inspection of Fire Doors NFPA 80

- ▶ **5.2.4 Periodic Inspection and Testing.**
- ▶ **5.2.4.1 *** Periodic inspections and testing shall be performed not less than annually.
- ▶ **5.2.4.2** As a minimum, the provisions of [5.2.3](#) shall be included in the periodic inspection and testing procedure.
- ▶ **5.2.4.3** Inspection shall include an operational test for automatic-closing doors and windows to verify that the assembly will close under fire conditions.
- ▶ **5.2.4.4** The assembly shall be reset after a successful test.
- ▶ **5.2.4.5** Resetting of the release mechanism shall be done in accordance with the manufacturer's instructions.
- ▶ **5.2.4.6 *** Hardware shall be examined, and inoperative hardware, parts, or other defective items shall be replaced without delay.
- ▶ **5.2.4.7** Tin-clad and kalamein doors shall be inspected for dry rot of the wood core.
- ▶ **5.2.4.8** Chains or cables employed shall be inspected for excessive wear, stretching, and binding.



Fire Door Tags NFPA 80

- ▶ **4.2 Listed and Labeled Products.**
- ▶ **4.2.1 *** Listed items shall be identified by a label.
- ▶ **4.2.2** Labels shall be applied in locations that are readily visible and convenient for identification by the AHJ after installation of the assembly.
- ▶ **4.2.3** The label or the listing shall be considered evidence that samplings of such devices or materials have been evaluated by tests and that such devices or materials are produced under an in-plant, follow-up inspection program.
- ▶ **4.2.4** Specification of items of a generic nature, such as hinges, that are not labeled shall comply with the specifications contained in this standard.
- ▶ **4.3.1 *** Only labeled fire doors shall be used.

NFPA Statement on Fire Door Labels

- ▶ [NFPA 80](#) contains specific requirements for the labels to be visible after installation. Section [4.2](#) requires the labels to be “...readily visible and convenient for identification by the AHJ...”
- ▶ NFPA released an official interpretation regarding an inquiry concerning the labels on fire doors being removed, painted, or defaced on April 20, 2004 (with an effective date of May 10, 2004). The official NFPA interpretation confirmed that the intent of 1.6.1 in the 1999 edition of [NFPA 80](#) (now [4.3.1](#) in the 2010 edition) is for the “...labels on fire doors not be removed, painted, or defaced while the door is in service.” In this same interpretation, NFPA confirmed that it is acceptable to verify the rating of the fire door by inspection and certification by a service that is acceptable to the AHJ.



Items in the Means of Egress NFPA 101

- ▶ **7.1.10.1 * Maintenance.** Means of egress shall be continuously maintained free of all obstructions or impediments to full instant use in the case of fire or other emergency.
- ▶ **7.1.10.2.1** No furnishings, decorations, or other objects shall obstruct exits or their access thereto, egress therefrom, or visibility thereof.



Storage in Mechanical Rooms

NFPA 1

- ▶ **10.18.5 Equipment Rooms.**
- ▶ **10.18.5.1** Combustible material shall not be stored in boiler rooms, mechanical rooms, or electrical equipment rooms.
- ▶ **10.18.5.2** Materials and supplies for the operation and maintenance of the equipment in the room shall be permitted.



Blocking Doors on the Inside NFPA 1

- ▶ **12.4.6.2.1** Doors, shutters, and windows shall be operable at all times. [80:5.1.2.1]
- ▶ **12.4.6.2.2** Doors, shutters, and windows shall be kept closed and latched or arranged for automatic closing. [80:5.1.2.2]
- ▶ **12.4.6.5 Removal of Door or Window** Where a fire door or fire window opening no longer functions as an opening, or the door or window is removed and not replaced, the opening shall be filled to maintain the required rating of the wall assembly. [80:5.1.5]



Questions?

