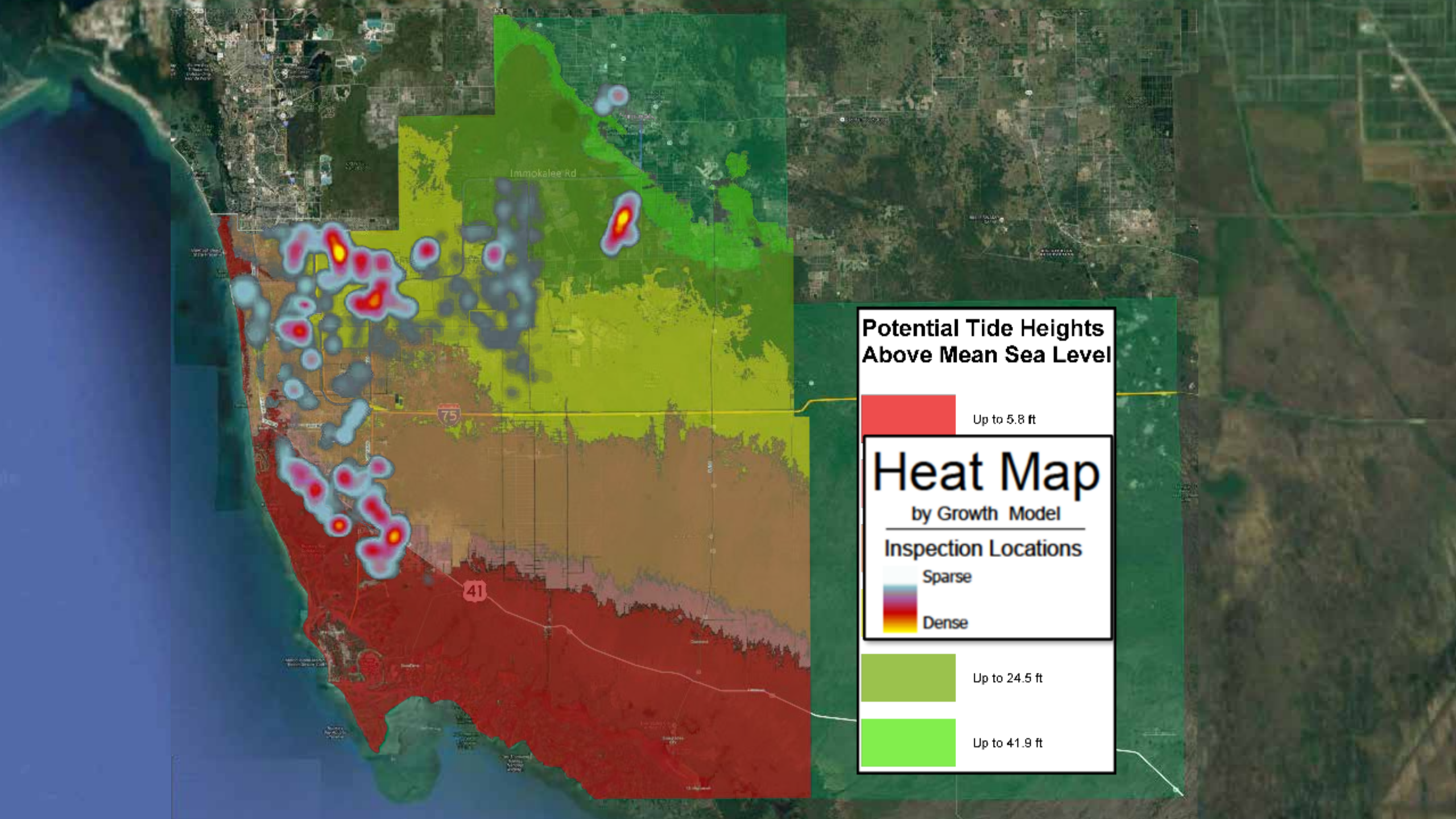




**Big Picture**



# Potential Tide Heights Above Mean Sea Level

Up to 5.8 ft

## Heat Map by Growth Model

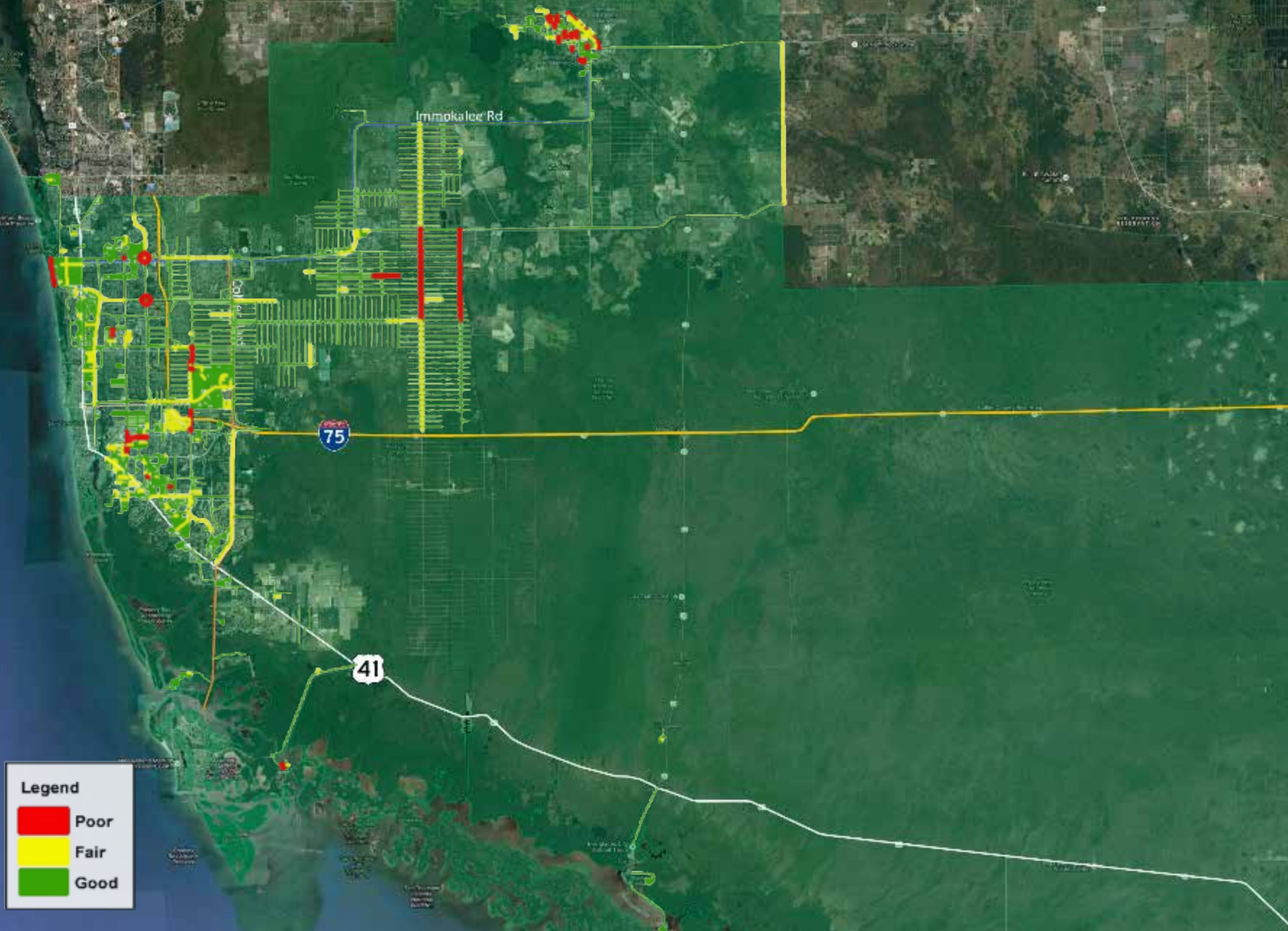
Inspection Locations  
Sparse  
Dense

Up to 24.5 ft

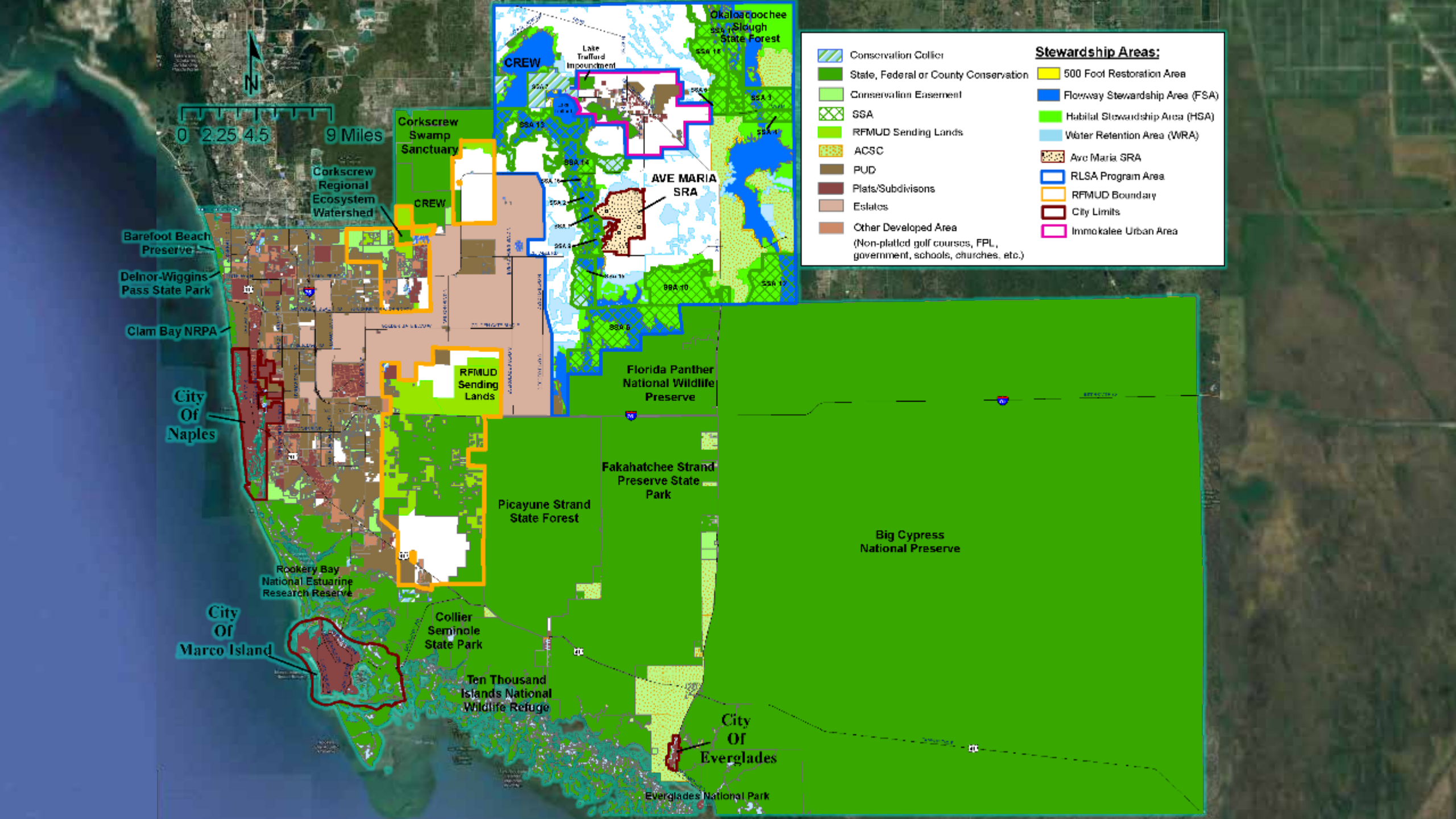
Up to 41.9 ft



# Road Network Conditions



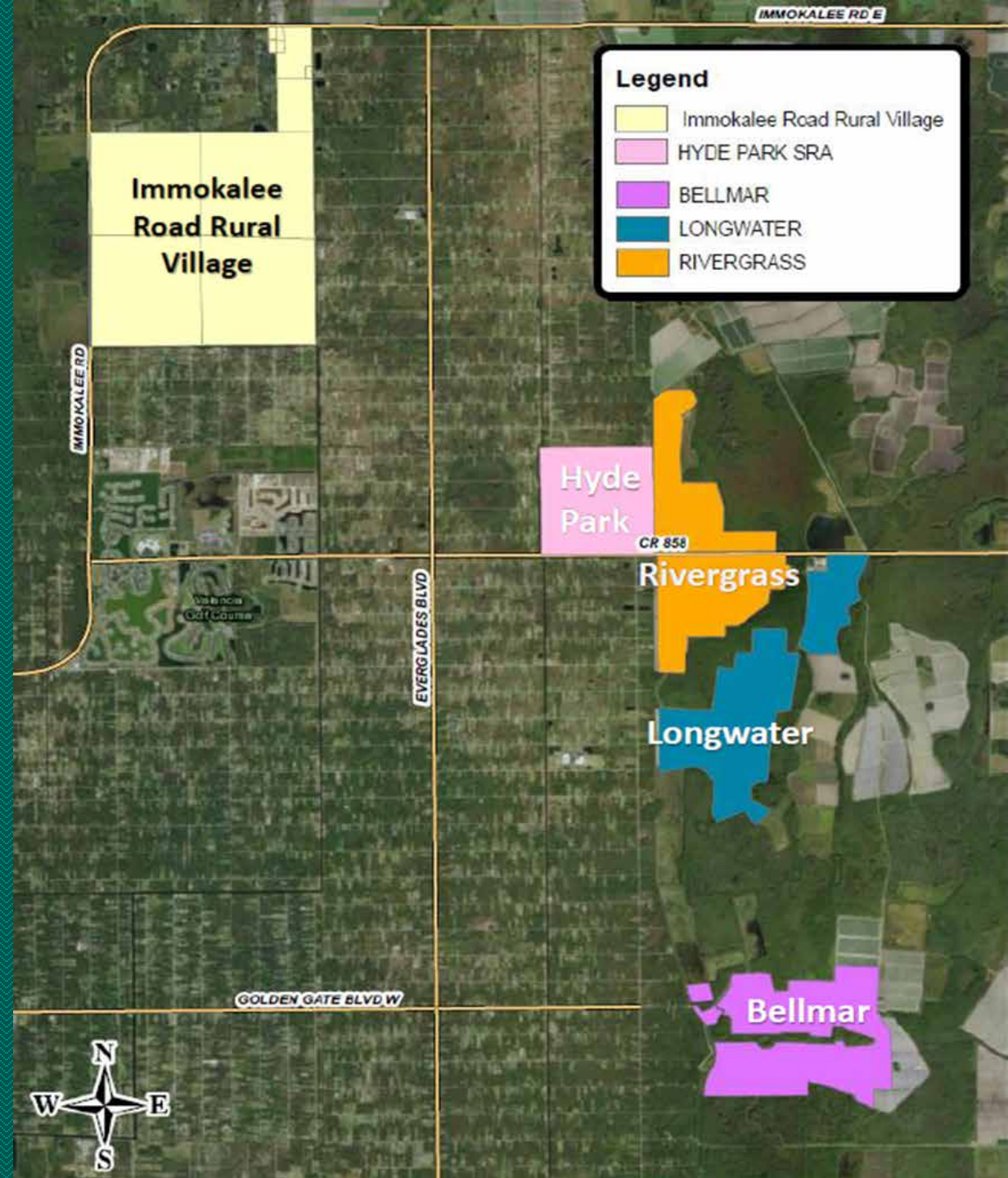






# Rural Lands Stewardship Area Villages

- Rivergrass: 997.53 acres/2,500 units (2.5/acre)
- Hyde Park: 655 acres/1,800 units (2.75/acre)
- Longwater: 999 acres/2,650 units (2.65/acre)
- Bellmar: 999 acres /2,750 units (2.7/acre)
- Immokalee Road Rural Village: 2,787.27 acres /4,042 total units (2.0/acre)  
(1.45/acres of 2,787.27 acres)





## Core Campus #3

- Big Island Corkscrew Regional Park,
- IFAS,
- Fair Grounds,
- EMS and CCSO Substation,
- NE Recycling Center,
- NE Utilities







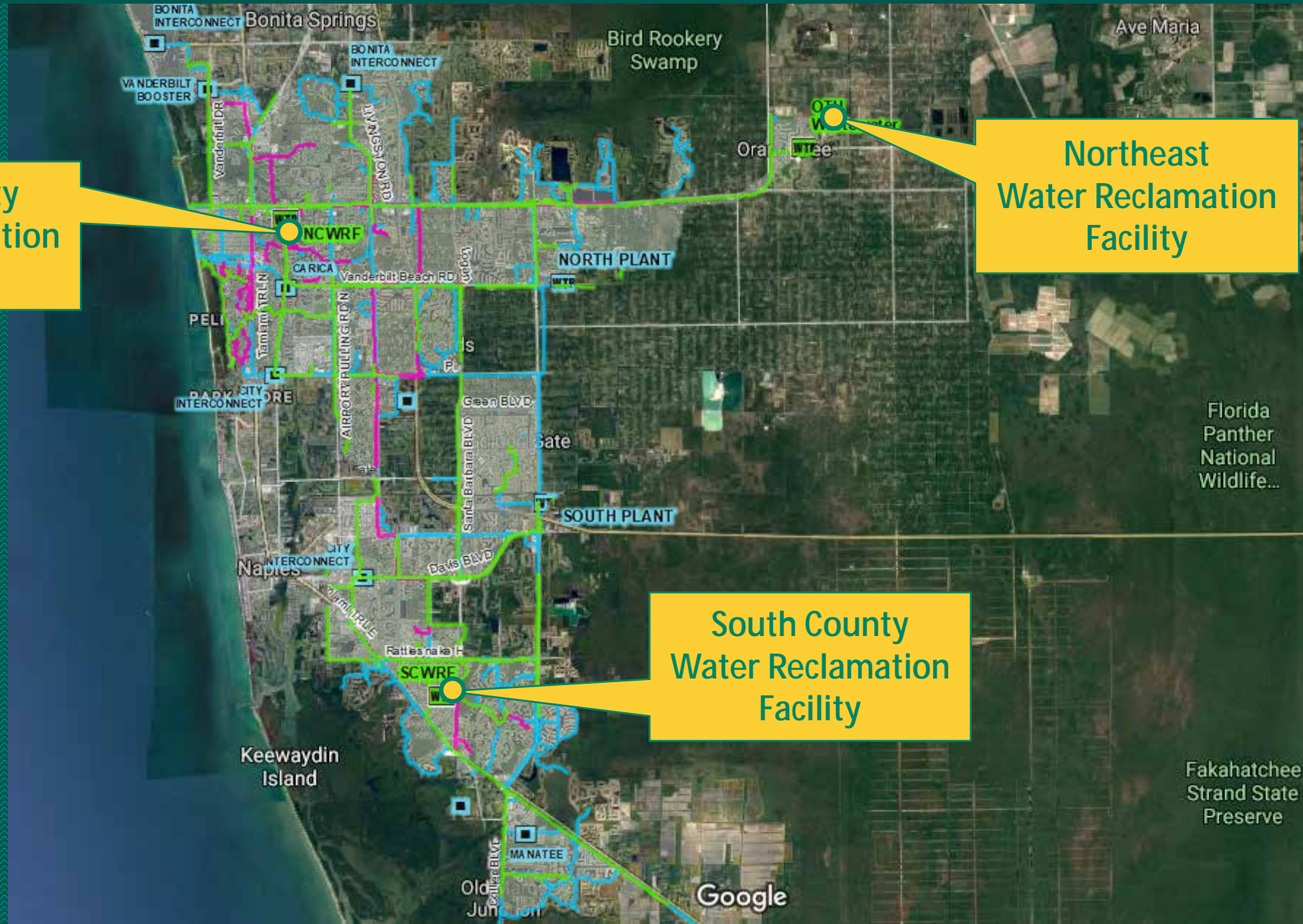


# Regional Wastewater Treatment

North County  
Water Reclamation  
Facility

Northeast  
Water Reclamation  
Facility

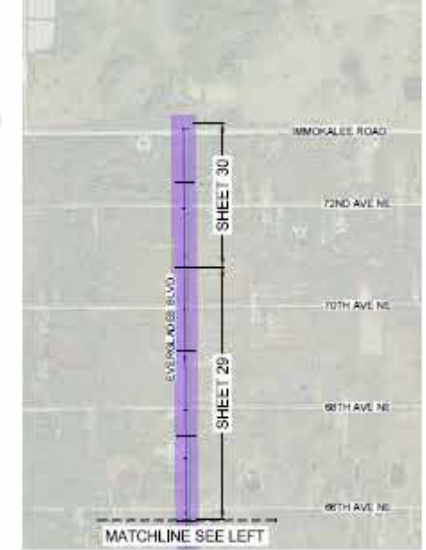
South County  
Water Reclamation  
Facility





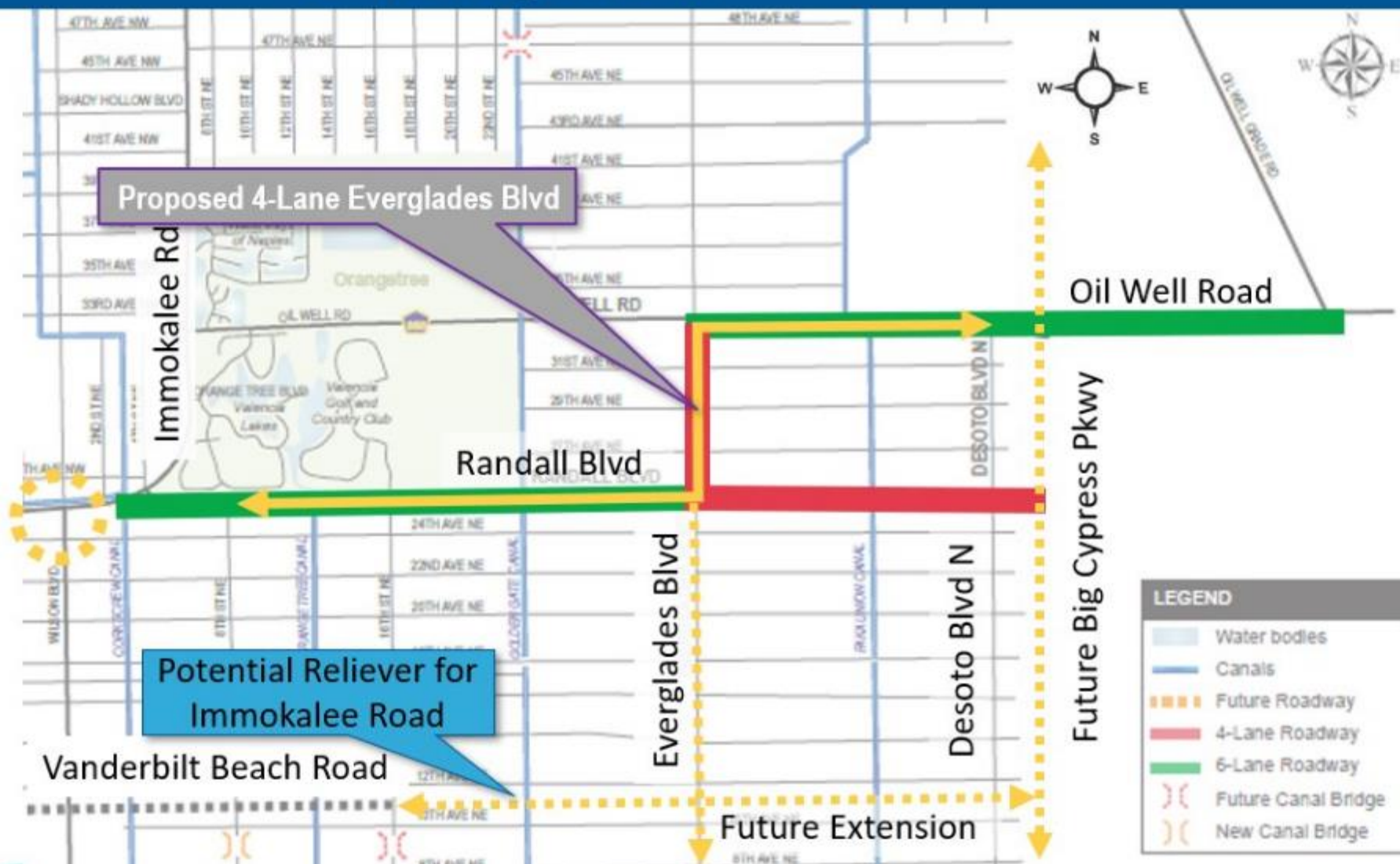
# NESA Project - 5 Segments

1. 39<sup>th</sup> Avenue
2. Park Site
3. Utility Plant Site
4. 41<sup>st</sup> Avenue
- 5A. 20<sup>th</sup> Street
- 5B. Everglades Blvd.



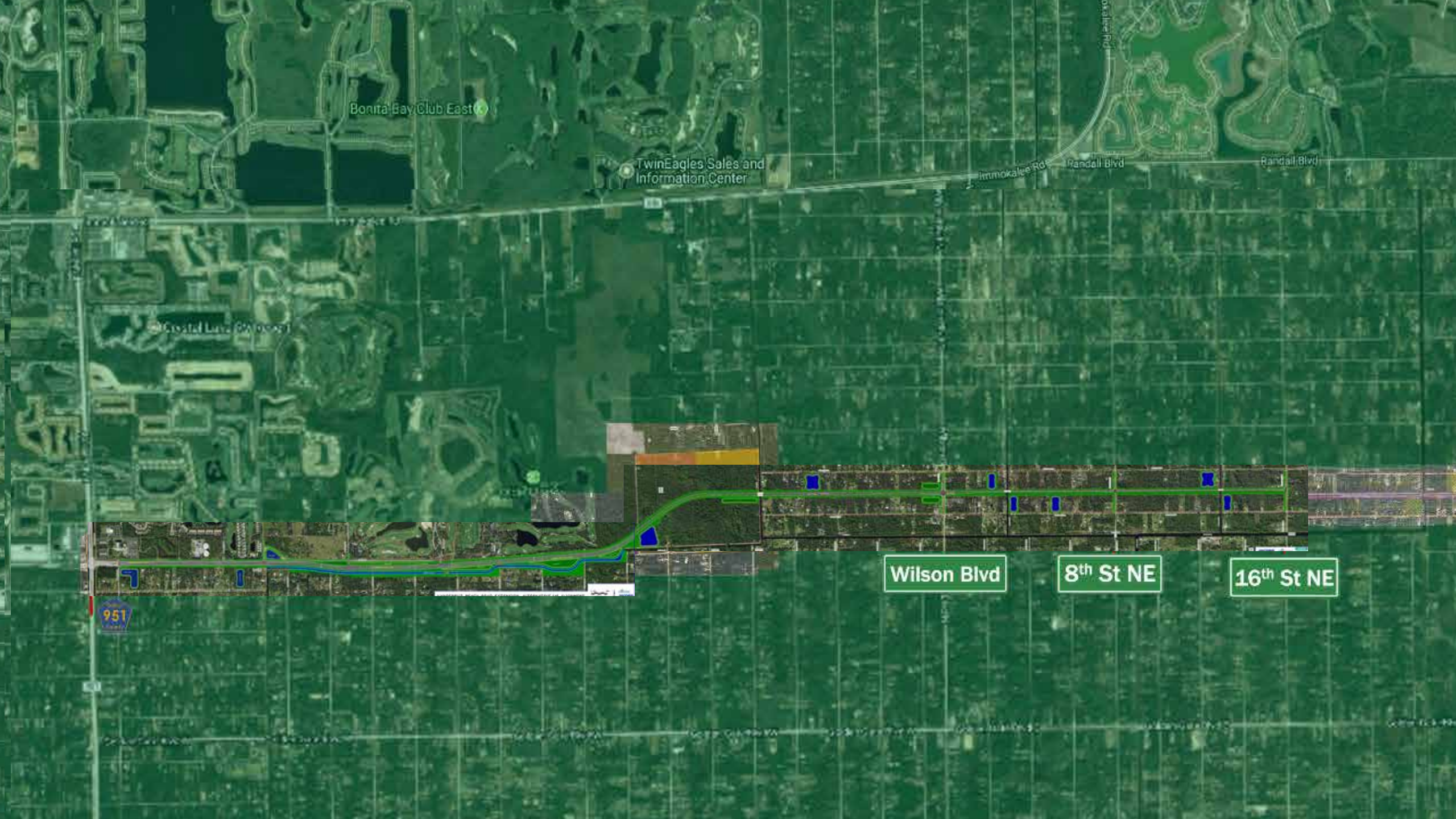


# Staff Recommendation Viable Alternative 2 Plus (2+) Future Network 4-Lane Everglades Blvd



- **Randall Blvd. (west of Everglades Blvd.) = 6-lane widening.**
- **Randall Blvd. (east of Everglades Blvd.) = 4-lane widening.**
- **Everglades Blvd. (Oil Well Rd. to Randall Blvd.) = 4-lane widening.**
- **Provide all study results to the Collier MPO for consideration in the 2045 LRTP.**





Bonita Bay Club East

Twin Eagles Sales and Information Center

Innokollee Rd

Randall Blvd

Randall Blvd

Crystal Lake SW

Wilson Blvd

8th St NE

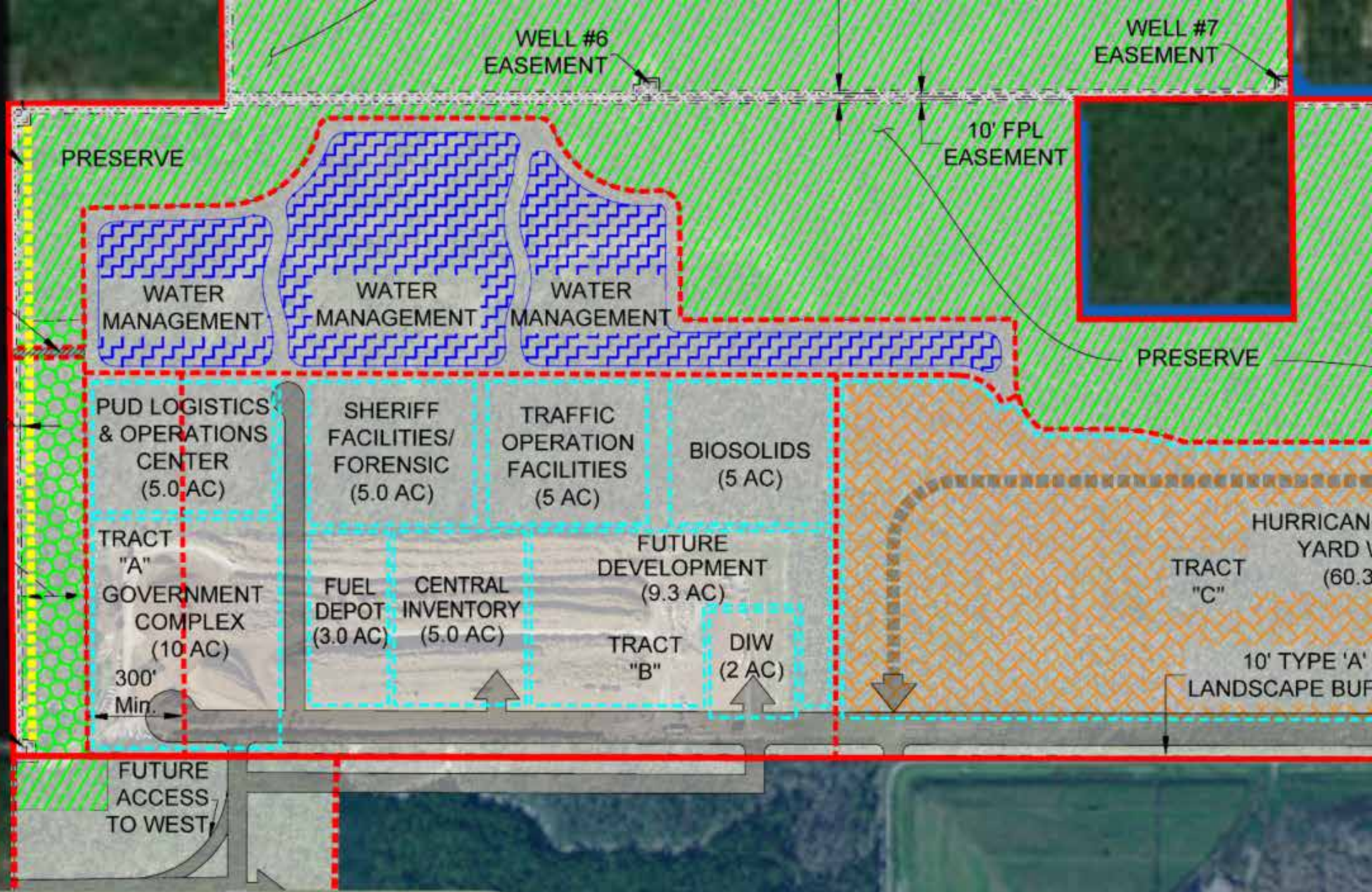
16th St NE

951











ACCESS  
TO WEST

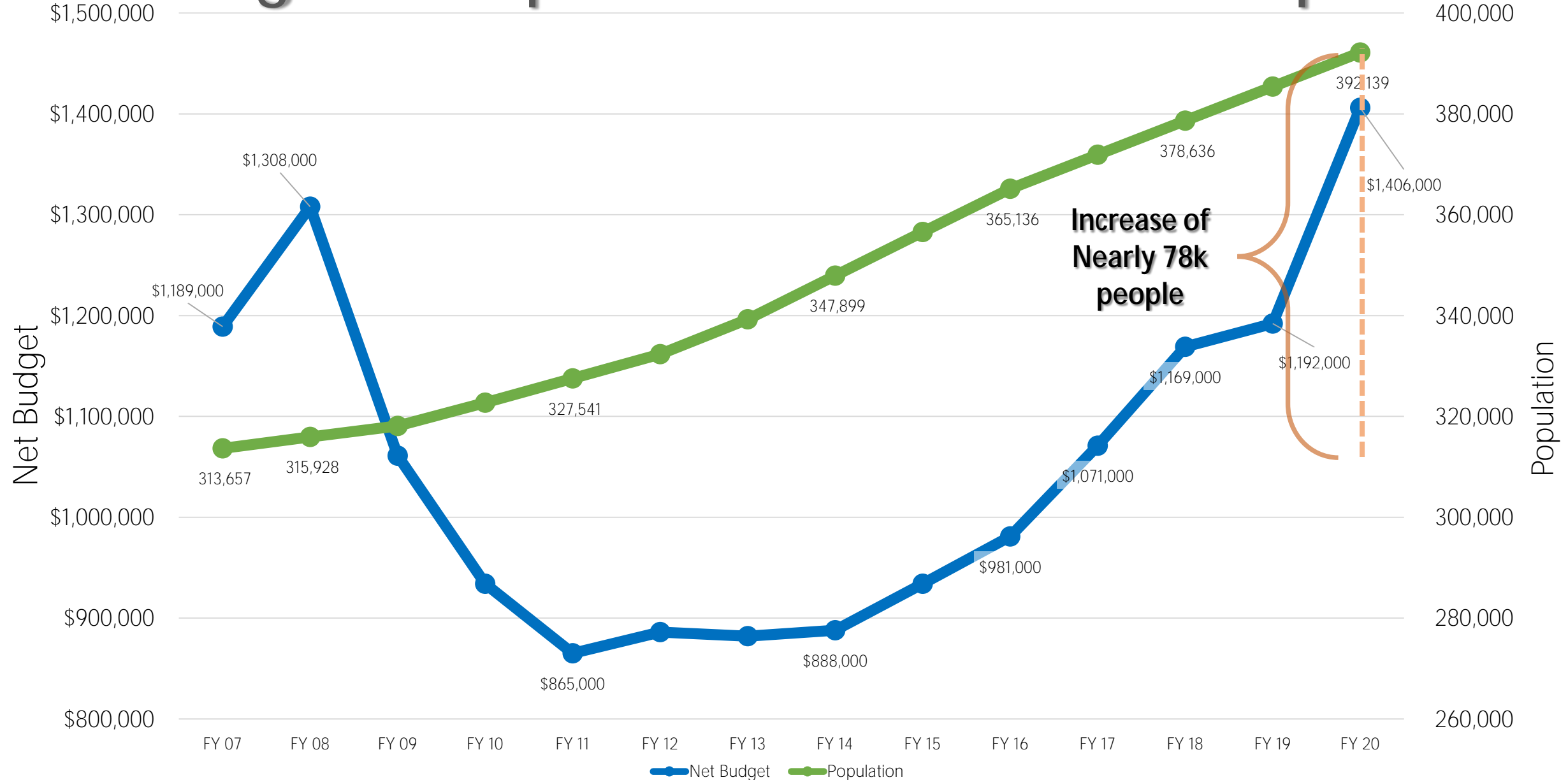








# Net Budget compared to Permanent Population





# Southwest-Central Florida Connector

- Committee to evaluate the Southwest-Central Florida Connector corridor, which extends from Collier County to Polk County
  - Revitalize rural communities,
  - Encourage job creation, and
  - Provide regional connectivity while leveraging technology to enhance quality of life and public safety, all while protecting the environment and natural resources.

